

NARROW GAUGE AND SHORT LINE GAZETTE

Accurate Information for Fine Modelbuilding ~ July/Aug 1996 \$4.25



New in Review

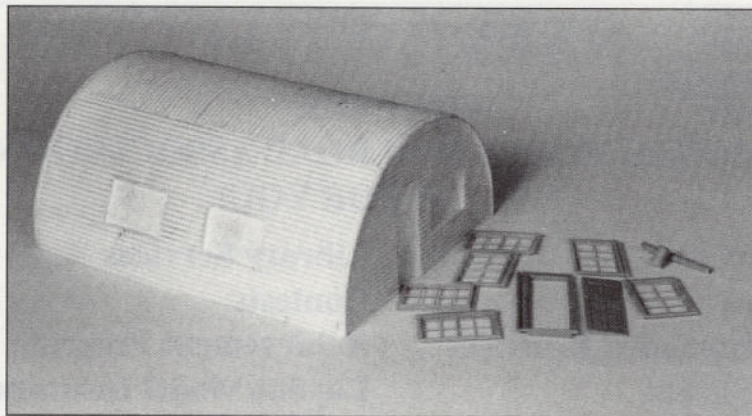
New York Railway Supply Co., 9158 Rothbury Dr. #183, Gaithersburg, MD 20879, 301/947-8075 sells a digital PTC Model III Programmable Turntable Controller for \$349.00. This controller includes a control box, power supply, stepper motor, motor shaft coupler, special multi-wire cables and plugs, control panel, and very complete instructions. An optional motor mount kit sells for \$26.00, and a power reversing option sells for \$14.00. The system does not include the turntable or spindle.

Once your turntable and spindle are mounted in your layout, you mount the stepper motor and, using the special multi-wire cables, hook up the controller, to the power supply, and control panel. Then you turn the turntable until it lines up with each of the diverging tracks on the layout. With each line-up, you "teach" the controller where the turntable track is. Note that you do this for both ends of the turntable for perfect alignment.

The control panel can be ordered with push buttons or a rotary switch. You operate your turntable by selecting a track from the control panel and pressing a pushbutton. The turntable will slowly move (the speed is adjustable) to that track and stop within 0.050-inch. The turntable will



automatically go in the shortest direction, and the reversing option will automatically reverse the current on the turntable so you do not need split rings or rails for reversing. I have just installed a new A-frame turntable on my Tuolumne Forks, and decided to use the PTC Model III to control it. I am very pleased with how easy it was to install and how perfectly it works. This is a well made and well thought out system that allows you to have an automatic turntable control without complicated mechanical devices. *Bob Brown.*



SkyVue Studio, 18 Adobe Dr., Concord, CA 94520, phone/fax 510/798-8098 sells an O scale handcar shed for \$30.00, a Mammoth Orange juice stand for \$25.00, a Quonset hut (shown) for \$50.00, and a yard office for \$30.00. The three buildings are sold pre-assembled from cast resin parts, but the Quonset hut is also available as a kit for \$35.00. SkyVue also offers a custom building, painting, pattern making, and casting service. Contact SkyVue for details. *Bob Brown.*

Grandt Line Products, 1040 B Shary Ct., Concord, CA 94518, 510/671-0143, fax 510/671-0806 is selling a new HO kit. The Reese St. Row Houses kit makes up into three miner's houses, and sells for \$24.95 plus \$5.10. These buildings are detailed plastic injection castings, and are based on houses built in the early 1900s in Silverton, Colorado. The kit also includes four styles of eave trim, three outhouses, interior floors, lean-tos and three lengths of board sidewalks. The doors and windows are separate castings, making painting easy. The houses can be assembled in several configurations, and are a wonderful way to provide housing in your latest boom town. *Bob Brown.*

